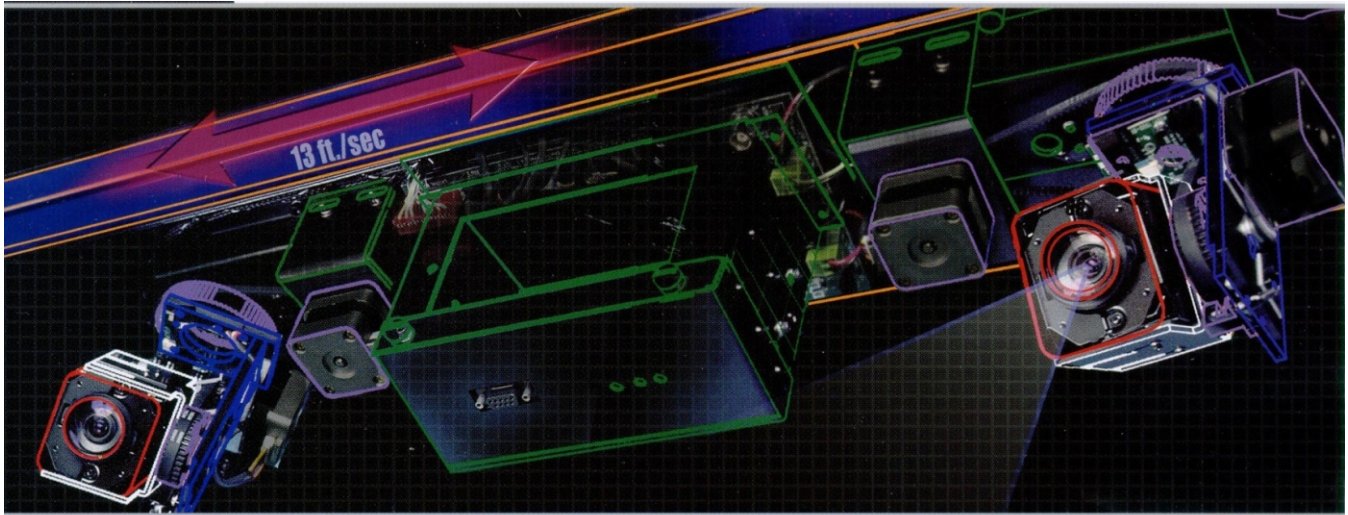


SentryVision®

SmartTrack

Mobile Robotic Surveillance System



SmartTrack systems provide unobstructed viewing of activities and assets in large facilities. SmartTrack has reduced shrinkage and improved security and safety in retail, industrial, transportation and institutional facilities worldwide.

ADVANCED TECHNOLOGY:

Introducing the world's most advanced, reliable and fastest traveling CCTV surveillance system. SmartTrack is configured with one or two fully programmable PTZ cameras mounted on a carriage that glides along a ceiling mounted track. The system travels at speeds up to 13 ft. (4 meters) per second and provide 360° unobstructed views to eliminate blind spots. Sophisticated software instructs the camera carriage to follow a pre-programmed tour. In addition, programmable inputs, such as door contacts and motion sensors, can instruct the carriage to travel to a fixed point, automatically. SmartTrack offers single dome or dual dome full function pan, tilt and zoom features even in programmed tour mode. A flick of the joystick transfers control back to the operator to observe events as required. Cameras are hidden from view inside a mirrored or tinted enclosure.

FEATURES INCLUDE:

- * One or two camera pods provide views of your facility with 360° pan, 110° tilt and up to 176X zoom capability
- * Six tours and up to 60 presets per camera allow programmable viewing and recording with or without operator assistance
- * Variable pan, tilt and lateral control allows the operator to respond quickly to potential problem situations at speeds of up to 13 feet (4 meters) per second
- * Lightweight carriage design and brushless drive motors make the carriage quick, quiet and reliable
- * New SentryVision® SmartTrack carriage, cameras and electronics can be retrofitted to existing SentryVision® tracks
- * Digital graphics provide on-screen diagnostics, software upload, and identifies the location of the carriage on the track

SentryVision® Server



SentryVision® Server is an IP addressable digital video server, giving users the ability to capture, stream, view, and store video images using a web browser with the reliability of the Linux OS.

SentryVision® Server, can be up and running in three easy steps, ensuring capture of important video, right out of the box.



1

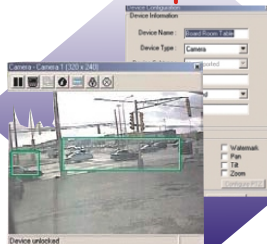
INSTALL



Install your SentryVision® Server unit on LAN and connect CCTV cameras.

2

CONFIGURE



Configure your recording style, user accounts, and video quality settings using the Administrative Module software.

3

VIEW



View video using SentryVision® Remote on the Internet or on a handheld device using SentryVision® Mobile via wireless LAN.



SentryVision® Server comes with:

Hardware

Choose from the configurations listed below:

SentryVision® Server is pre-installed on one of four hardware configurations, each offering a different set of capabilities to fit your environment.

- * 4 channel, 160 GB hard drive, 512MB RAM
- * 12 channel, 250 GB hard drive, 512MB RAM

- * 8 channel, 160 GB hard drive, 512MB RAM
- * 16 channel, 1000 GB hard drive, 512MB RAM

Storage Tip:

4 camera, 160GB system
continuously recording at
320x240 resolution with
medium activity levels
= 34 days
video storage (approx)

Hardware Specification

Dimensions [WxDxH]: <ul style="list-style-type: none">* Tower - 8"x17"x17"* Rackmount 4U - 19"x19"x7" Supported Video Formats: NTSC, PAL	Backplane Connections: <ul style="list-style-type: none">* 4, 8, 12, 16 BNC input connections* 1 serial port - RS232 (DB9)* RJ45 Ethernet* Voltage switch 110/220VAC* Power cable Power Supply: <ul style="list-style-type: none">* 120/240V, 60/50Hz, 300W max Processor: P4, 2.4 GHz	Optional Equipment: <ul style="list-style-type: none">* RS232-RS422 converter required for Pelco, Panasonic, and Sensomatic, and PTZ/Dome camera control* KTD312 is required for Kalatel® PTZ/Dome* 8 Input Digital Alarm Box
---	---	--



Active SentryVision® Mobile

Users can install SentryVision® Mobile on their handheld device, and take advantage of a second video viewing tool by accessing and controlling live video from their server using a wireless LAN connection.

SentryVision® Mobile Software:

OS: Windows® CE

Required Connection:

- * 802.11b/G Wireless LAN

Live Video Tools:

- * Adjustable hue, brightness, color and contrast
- * Selectable cameras using intuitive maps
- * Select from PTZ camera presets
- * Navigation button control for PTZ

Remote Control of:

- * PTZ Cameras

Certified Equipment:

- * HP® iPAQ™ 2210/4150/4350
- * Symbol® PPT 2846™
- * Cisco® Aironet® Wireless LAN
- * D-Link Wireless Products (DI-624+, 700AP, 900AP, ANT24-0401)



SentryVision® Server comes with:

Software

SentryVision® server allows multiple users to simultaneously connect to a variety of SentryVision® DVMS (Digital Video Management System) via LAN - across TCIP/IP networks. The system uses a Windows-based application for configuration and a browser-based client for remote viewing of live and recorded video for quick and easy investigation of security issues, as well as policies and procedure compliance.

Server Software

OS: Linux Slackware 8.0 (kernel 2.4.20)

Protocols: TCP/IP, HTTP

Communication: Ethernet 10/100 base-T

Encryption: 128-bit encryption

Storage Format:

* TeleWatch Video Format (TVF)

Video File Duration:

* User-definable by device

Compression: MPEG-4, JPEG

CODEC:

* MPEG-4 [SentryVision® Viewing]
* Motion JPEG [SentryVision® Mobile Viewer]

Supported Cameras:

* **Stationary:** All NTSC & PAL format Cameras
* **PTZ:** Sensomatic Dome™ Camera, Pelco™ Spectra Dome™ Camera, Panasonic® 600/800 Series PTZ Cameras, Kalatel® Domes, Sentry Technology SmartTrack Camera System

Supported Clients:

* SentryVision® Administration Module Software
* SentryVision® Viewer Software
* SentryVision® Viewer
* SentryVision® Mobile Viewer

Alarming

* 8 Inputs

Maintenance:

* Remotely install all the latest firmware patches



Administration Module

OS: Windows® 95/98/2000/ME/XP

Maintain Users and Permissions:

* Create user accounts with password protection
* Add and maintain a set of functionality-based permissions associated for each user

Add and Remove Cameras:

* Automated, using camera finder

Modify Camera Settings, Including:

* Hue, brightness, contrast, color
* Resolution: 640x480, 640x240, 320x240, 160x120
* PTZ Preset configuration
* Motion detection
* PTZ camera tour configuration
* Pre and Post recording times

Administer Network & Settings:

* IP information
* DNS information
* Number of allowable connections

Configure Video Stream Information:

* Compression
* Stream rate (fps)
* Interframe value
* Timestamp overlay

Configure Storage Parameters:

* By device
* Delete amount, delete threshold

Modify Alarm Input Settings:

* Device timeouts
* Alarm Priority
* Normally Open/Normally Closed (NO/NC)

Manage Alarm Associations:

* Association with active cameras
* Record on alarm
* Stream Live Video on alarm

Viewer Software

OS: Windows® 95/98/2000/ME/XP

Required Browser:

* Microsoft® IE 5.x or higher

Recommended Internet Connection:

* 128 ISDN or greater

Live Video Tools:

* Adjustable compression settings
* An easy to use drag and drop camera selection
* Single pane, 2x2, 3x3 & 4x4 views

Recording Video Search Parameters:

* By device
* By date
* By time

Remote Control of:

* PTZ Cameras
* Motion detection zones
* Recording modes

Recording Video Tools:

* Download multiple record video files to any mapped drive
* Take snapshots of important events
* Export video to AVI
* VCR-like playback controls

Event Management Tools:

* View active alarm conditions in summarized and detailed mode
* Timeout alarm inputs
* Acknowledge alarms individually or by group
* View video-based on alarm association

Dynamic Branding:

* Insert company logo on product splash screens
* Customize application captions with company information

Head Office: 1881 Lakeland Avenue, Ronkonkoma, NY, 11779 · Tel: 631-739-2000 · Fax: 631-739-2116 · Toll Free: 800-645-4224

Canada: 37 Voyager Court North, Toronto, ON, M9W 4Y2 · Tel: 416-674-4788 · Fax: 416-674-5075 · Toll Free: 800-461-2803

Website: www.sentrytechnology.com