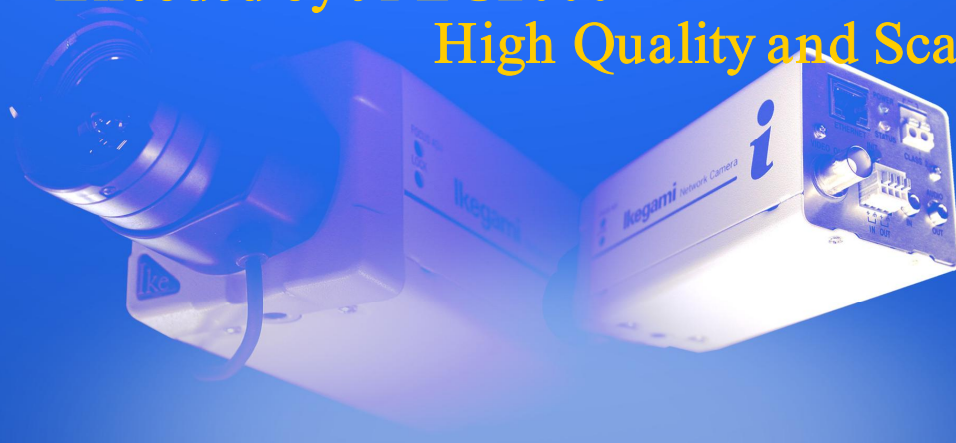


IP Network Security Solution

Encoded by JPEG2000

High Quality and Scalability !



**Network Camera
IPD-Q01**



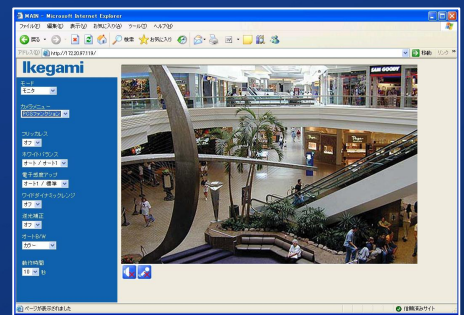
**Network Encoder
IEN-T01**



A New Network Solution provided by Ikegami.
Using JPEG2000 image format, this camera and encoder guarantee high quality motion and still images at all times regardless of the bandwidth restrictions on the network. Compare with the consumer based product to see the difference.

- JPEG2000 Compression
- 30fps Maximum
- Motion Detection (max 1350 positions)
- RJ45 Interface and BNC Video Out
- Audio IN/OUT
- I/O terminal
- AC24V/DC12V

Monitoring Image





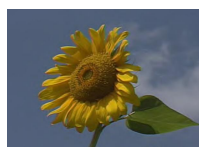
Network Encoder IEN-T01

Network Camera IPD-Q01

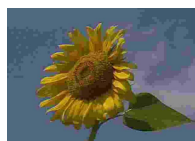


About JPEG2000

- Better compression performance than JPEG or Motion-JPEG.
- Transmit different resolution, image quality and frame rate from single coding data; Different picture size selectable in accordance with image devices and transmission frequency bandwidth of network line.
- Metadata (copyright, coding data etc.) attachment available.
- Stable JPEG2000 transmission bit rate (unaffected by image condition)
- Image quality does not deteriorate
- Less deterioration by transmission error and noise.

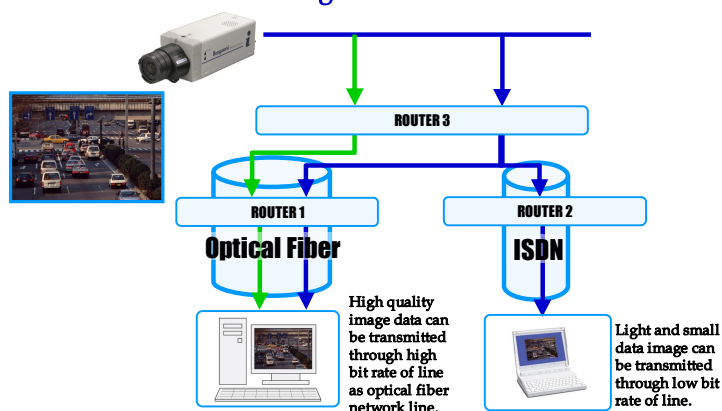


JPEG2000(24KB)



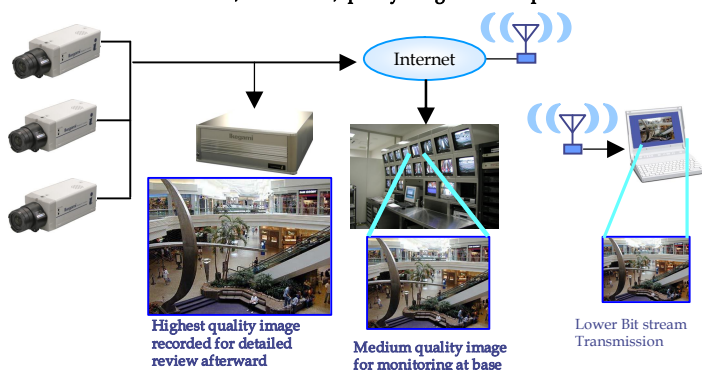
Motion-JPEG (25KB)

IP Network Image Data Transmission



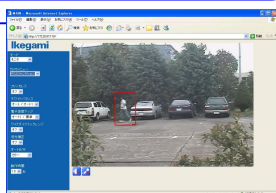
Various Image Sizes Chosen Remotely

Different resolutions, frame rates, quality images can be operated Simultaneously



Motion Detection Image

- Detection under difficult condition
- Strong wind
- Low lux



Specification

	Network Camera IPD-Q01	Network Encoder IEN-T01
Video Input	-	VBS 1.0Vp-p/75Ω(NTSC)
Image Devise	1/3 inch Interline Transfer CCD	-
Effective pixels	Approx. 380,000 pixels	-
Video output	VBS 1.0Vp-p/75 ohm (NTSC)	VBS1.0Vp-p/75 ohm (NTSC), Loop through
S/N Ratio	Over 48dB	-
Minimum Illumination	0.35 lx / F1.2 (30IRE) 0.7 lx / F1.2 (50IRE) 1.0 lx / F1.4 (50IRE)	-
Back Light Compensation	On/ Off switchable	-
AES Function	On / Off switchable, AES range 1:1600	-
White Balance	Automatic Tracking White Balance	-
AGC	On/ Off switchable	-
Auto Iris Function	Video Iris / DC Iris (switchable/DC Iris level adjustable)	-
Camera ID Function	Built in 1 line, 16 character	-
Remote Setup	Possible over Client PC	
Lens Mount	CS Mount / C Mount (with adaptor)	-
Image Quality	720x480, 720x240, 360x240, 360x120, 180x120, 180x60	
Compression	JPEG2000	
Image Quality	5 Levels	
Frame rate	30fps Max	
Audio	ADPCM Half-Duplex audio (Microphone input, Line output)	ADPCM Half-Duplex audio (Line input, Line output)
Motion Detection Function	Possible H45xV30 max.1350positions	
Image recording Function	Possible (Alarm 380 Frame/Pre Alarm 120Frame)	
Alarm Mail Function	Possible (Without image file)	
Network Interface	10BASE-T/100BASE-TX	
Protocol	TCP/IP, HTTP, SMTP, POP3, DHCP, NTP	
Browser	Internet Explorer 5.5 or higher	
Power Requirement	AC24V±10% 50/60Hz / DC12V (10.5V to 15V)	
Power Consumption	Less than 8W	
Ambient Temperature	-10°C to +50°C (14°F to 122°F)	
Camera Mount	1/4" -20UNC(Upper/Bottom)	-
	W62 x H55 x D135 mm (2.44x2.16x5.31inch)	W88 X H44 X D159mm (3.46x1.73x6.26inch)
Weight	Less than 600g (1.32lbs)	
Input/Output connector	Ethernet:RJ-45 Video Out: BNC AUDIO IN: 3.5mm mono mini-jack (Plug-in Power) AUDIO OUT 3.5mm mono mini-jack LENS: 4P (E4-191J-150 or equivalent) AC24V/DC12V: 2P push terminal I/O terminal :4P push terminal	Ethernet:RJ-45 Video IN: BNC Video OUT: BNC AUDIO IN: 3.5mm mono mini-jack AUDIO OUT 3.5mm mono mini-jack AC24V/DC12V: 2P push terminal DC12V: AC adaptor-jack I/O terminal :4P push terminal RS-485: 3P push terminal RS-232C:9P D-SUB

IPD-Q01



IEN-T01

Front Panel



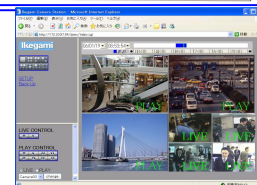
Rear Panel



Network Recorder GUI Image

- 32ch Multi-Recording/Distribution
- Multi -Display Monitoring (Max.16-Split)
- Network Security Control etc.

*Not an actual image



Design and specifications are subject to change without notice.

Ikegami IKEGAMI ELECTRONICS (U.S.A.), INC. ■URL <http://www.ikegami.com>

U122A063-SELF

HEADQUARTERS 37 BROOK AVENUE, MAYWOOD, NJ 07607 Phone:(201) 368-9171 Fax:(201)368-1305
 WESTCOAST OFFICE 2631 MANHATTAN BEACH BLVD., REDONDO BEACH, CA 90278 Phone:(310) 297-1900 Fax:(310) 536-9550
 SOUTHWEST OFFICE 733 BEARDEN ROAD, WAXAHACHIE, TX 75167 Phone:(972) 869-2363 Fax:(972) 556-1057
 MIDWEST OFFICE 747 CHURCH ROAD, UNIT C1 ELMHURST, IL 60126 Phone:(630) 834-9774 Fax:(630) 834-8689
 SOUTHEAST OFFICE 5200 N.W. 33RD AVENUE, SUITE 111 FORT LAUDERDALE, FL 33309 Phone:(954) 735-2203 Fax: (954) 735-2227