

AXIS Camera Management

Efficient management tool for your Axis network video products.



- > Powerful management of single or multiple sites
- > Easy camera configuration
- > Reliable firmware upgrade
- > Efficient management of camera applications
- > Intuitive user interface

AXIS Camera Management is a powerful and efficient installation and management tool that is specially designed to be used with Axis network video products. Using standard network protocols and methods, the tool can automatically find and configure devices, set IP addresses, show connection status, manage firmware upgrades and camera applications for multiple devices.

AXIS Camera Management can efficiently manage a few to several thousand of Axis network video products in one or several sites.

It automatically locates and adds multiple Axis video products on the local network and the software allows the user to set the IP addresses manually or configure the device for automatic DHCP assignment.

For easy system configuration camera parameters can be copied from one device to several other devices in the system.

Support for AXIS Camera Application Platform makes it possible to efficiently distribute compatible applications as well as license key files to several devices in the system.

AXIS Camera Management has an intuitive user interface with display of device name, address, model, firmware version and status.

For efficient maintenance and administration, tags can be assigned to the devices in the system. The user-defined tags can, for example, be used to manage cameras in a certain area or list cameras scheduled for firmware upgrade.

Technical specifications – AXIS Camera Management

Compatible products

Models Axis video products with firmware version 4.40 or higher

Camera management

Finding new devices Discovery of new devices on the network, within the local subnet or on remote networks

Device tagging User-defined tags

Unit status Device status monitoring indicating accessible devices

Device configuration Save, copy and configure standard parameters including device time, device users and IP settings to several devices

Device management Restore to factory default values or restart device

Firmware upgrade Upgrade of multiple devices sequentially or in parallel
Automatic download of latest available firmware from Axis

Application management Support for AXIS Camera Application Platform
Installation of Axis-compatible applications including license files to multiple devices

General

Logging Activity log with sort/search functions showing performed actions and changed device status

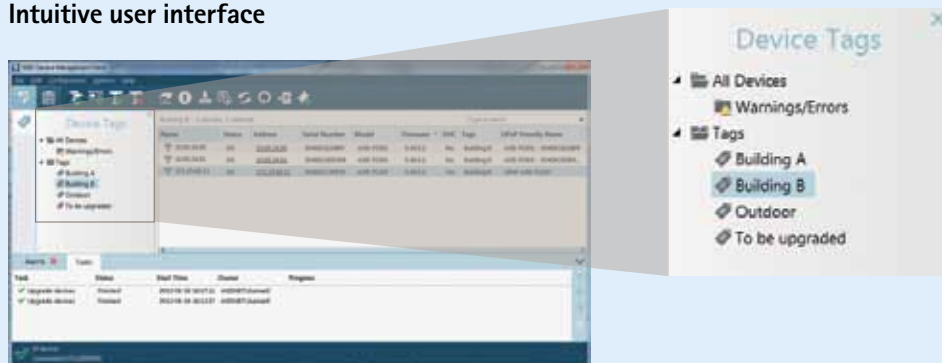
Language English

Minimum system requirements Intel i5 or equivalent AMD
RAM: 2 GB (8 GB recommended for larger systems)

Operating systems Windows 8 Pro, Windows 7 Professional, Windows Vista Business, Windows XP Professional (server and/or client), Windows 2012 Server, Windows 2008 Server R2, Windows 2008 Server, Windows 2003 Server
Always use the latest service packs
Microsoft .NET runtime environment (included in installation package)

More information is available at www.axis.com

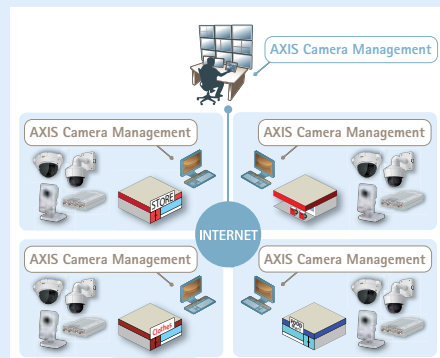
Intuitive user interface



To simplify maintenance and efficiently manage the devices in the system it is possible to assign one or several user-defined tags.

Efficient device management

Multiple site management



Firmware upgrade



Application distribution

